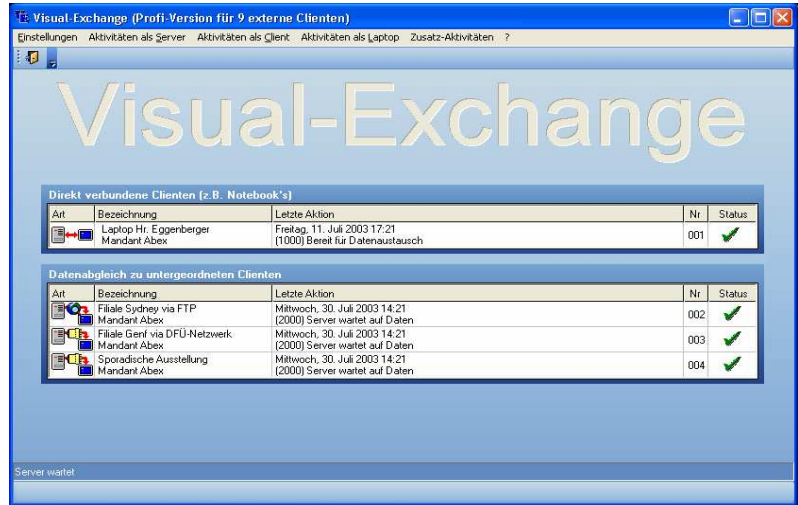


What it does

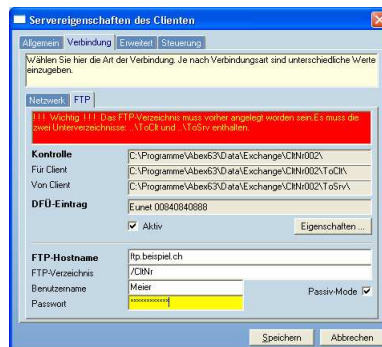
The program enables data processed by Visual-Adress to be synchronised bidirectionally. This includes addresses and their additional information, notes and appointments, as well as stored documents that are processed in Word or Excel, for example.

All the data must be present on the main server. This main server can have several subordinate clients. A filter can be defined for each client specifying the data that it is to receive. In turn, each client can have sub-clients with whom it can synchronise its data. Synchronisation can be requested manually, or started automatically (at a pre-set time).



Transmission types

Apart from the first session, in principle only modified and/or newly entered data is transmitted. The program compiles a control database to manage this. Depending on requirements and technical options, synchronisation can be performed directly (e.g. laptops), via network, via router, by modem, or as an FTP upload/download. The transmission method can be saved for each client individually.



Dealing with inconsistencies

Although in practice data conflicts occur relatively rarely thanks to regional or customer divisions, this is a main focus of the program. If it is established that the same record has been changed by several users, a screen containing the different values is displayed for the client. The user can then decide which of the following is correct: the server or client data, or individual fields within the record.



Price

| | |
|------------|-------|
| 1 Clients | 400 |
| 2 Clients | 730 |
| 3 Clients | 1030 |
| 4 Clients | 1310 |
| 5 Clients | 1580 |
| 6 Clients | 1840 |
| 7 Clients | 2090 |
| 8 Clients | 2330 |
| 9 Clients | 2570 |
| 10 Clients | 2800 |
| 11 Clients | 3030 |
| 12 Clients | 3250 |
| 13 Clients | 3470 |
| 14 Clients | 3690 |
| 15 Clients | 3900 |
| 16 Clients | 4110 |
| 17 Clients | 4320 |
| 18 Clients | 4530 |
| 19 Clients | 4730 |
| 20 Clients | 4930 |
| 25 Clients | 5950 |
| 30 Clients | 6940 |
| 35 Clients | 7900 |
| 40 Clients | 8840 |
| 50 Clients | 10680 |