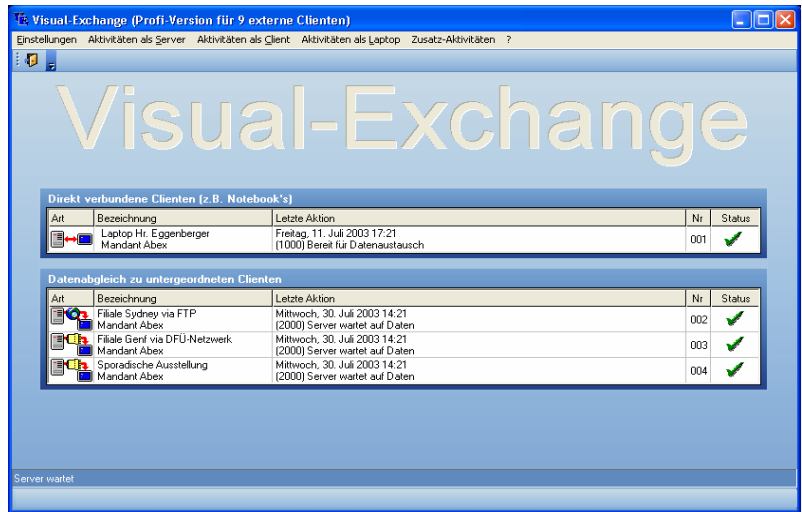


What it does

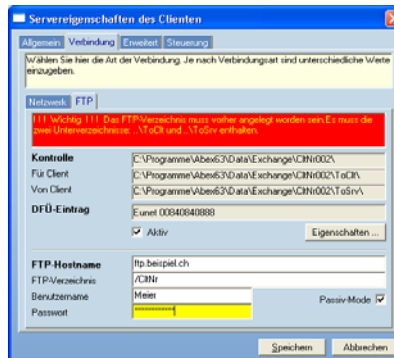
The program enables data processed by Visual-Adress to be synchronised bidirectionally. This includes addresses and their additional information, notes and appointments, as well as stored documents that are processed in Word or Excel, for example.

All the data must be present on the main server. This main server can have several subordinate clients. A filter can be defined for each client specifying the data that it is to receive. In turn, each client can have sub-clients with whom it can synchronise its data. Synchronisation can be requested manually, or started automatically (at a pre-set time).



Transmission types

Apart from the first session, in principle only modified and/or newly entered data is transmitted. The program compiles a control database to manage this. Depending on requirements and technical options, synchronisation can be performed directly (e.g. laptops), via network, via router, by modem, or as an FTP upload/download. The transmission method can be saved for each client individually.



Price

1 Clients	600
2 Clients	1100
3 Clients	1550
4 Clients	1980
5 Clients	2390
6 Clients	2780
7 Clients	3160
8 Clients	3530
9 Clients	3890
10 Clients	4250
11 Clients	4600
12 Clients	4940
13 Clients	5280
14 Clients	5610
15 Clients	5940
16 Clients	6270
17 Clients	6590
18 Clients	6910
19 Clients	7220
20 Clients	7530
25 Clients	9090
30 Clients	10600
35 Clients	12070
40 Clients	13500
50 Clients	16310

Dealing with inconsistencies

Although in practice data conflicts occur relatively rarely thanks to regional or customer divisions, this is a main focus of the program. If it is established that the same record has been changed by several users, a screen containing the different values is displayed for the client. The user can then decide which of the following is correct: the server or client data, or individual fields within the record.

