

Installation instruction for Visual-Adress 6

Preparations

- Before the installation of Visual-Adress please finish you all applications on your PC. Make sure itself, that you have harvest and writing rights on all drives and file tables, specifically at network installations.
- storage you before the installation the table of Abex incl. all subdirectories.
- **Specifically with Novell- Networks**
Check in the Startscript of the server whether following line exists and you supplement these if necessary.
set maximum record locks per connection = 10000 (would be more highly better 20000).

If you installed Visual-Adress 4 (Update)

With an Update of Visual-Adress version 4x on version 6, the existing data of the version 4x are converted. Keep an eye on sufficiently free storage area on that occasion since all data and documents are copied. Make a backup of the Abex Data incl all subdirectories.

Respect:

With the Update of the version 4x on version 6, filters go finished roll defined by you and lost. Print out the data field definitions of the lists, that are still required. This eases the "reproduction" of the lists in the new program.

Data takeover from Visual-Adress 4.50

Beside the installation point of "New Installation", the hint appears to "data takeover of version 4.50. you go" sender through the installation routine statements up to the point. You input the required statements and then click on further. Only from this point, your entire Visual-Adress are copied 4.50 data and for are fitted the version 6.

An additional convertibility of the data is with the program "Vaconv60.exe which you possibly find program table in the Abex6. Visual-Adress 6 must be installed for it as a matter of priority.

If you have Visual-Adress 5 of install (Update)

Then, we recommend you, the whole Abex5 table of securing. Then execute the installation type "Programm update." With the first start, following news appears to the version 6:



With this action, the data base is tried on on the current format. Execute the convertibility with all active Visual-Adress clients.

Respect: An adaptation of Visual-Adress's 5 clients on the version 6 can be canceled no more. It recommends itself a data protection of the Abex5 before the convertibility to do data.

Start the installation

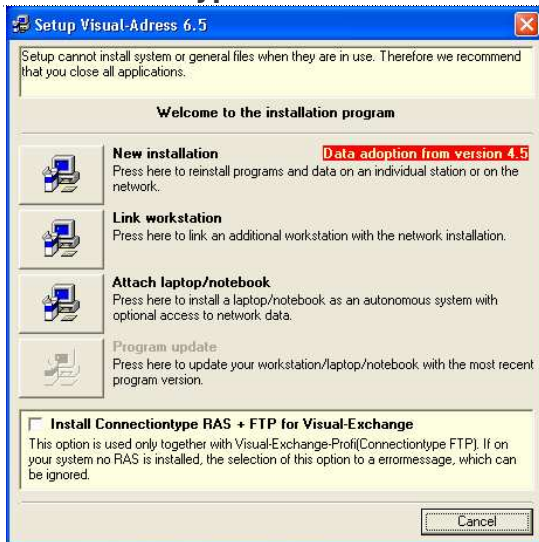
Language selection



- Put in the Visual-Adress CD into your drive. The Setup should be started automatically in normally. Otherwise, you start the Setup.exe directly from the CD or via start/executes.
- Some temporary files, which are used only for the installation, now become it copied. You reach after it into the language selection.
- Select you the wished dialogue language for the installation. You then reach into the overview of the installation types.

Installation instruction for Visual-Adress 6 (continuation)

Installation type



New installation

If Visual-Adress of never install became with you or you do an Update of the version 4x. If this is the single possibility of the installation. Please heed the hint involves the data takeover from Visual-Adress 4.50.

Link workstation (Network)

Before you tie up a workstation, Visual-Adress must become on your server of install. The installation on the workstation also takes place from the CD Rome. If this is not possible, you copy the CD on a network drive. With the selection for the program table of the workstations, we recommend the programs to you pub of installing. The performance of your servers will thank you it. Still declare the path data table for the Abex6 on your server, or you choose "searching".

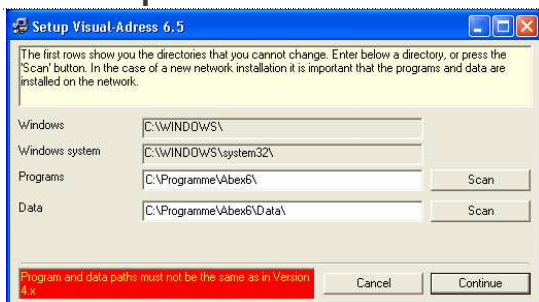
Attach laptop/notebook

This installation type enables you of the working, with a laptop/notebook in the network. You/they can pick the pubs program and data path as well as the path to the data table of the servers, on which Visual-Adress Install is.

Program update

This installation type takes place from CD. The Setup - program recognized on reason of the enrollments, that Visual-Adress was already installed. With the program update is updated only the programs and DLL's.

Drives input



After the selection of the installation type, you reach complaint the drive and directory into the mask.

On this mask, the drive names are proposed. According to type of the installation of altering these, you have the possibility. Please heed the hints of the introduced installation types. if you click on "further" according to the path statements, you are asked "table produces". you choose yes and the required tables been produced automatically. With no, you come back to the drive statement and can alter the statements if necessary.

Program group

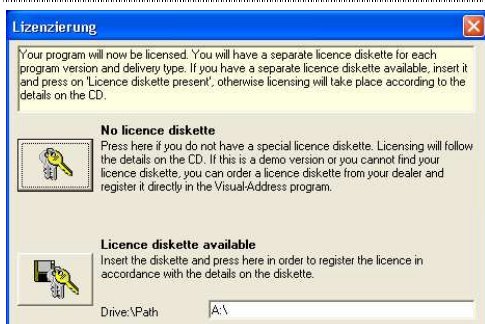


Take over the proposed program group or select one of your existing one(s).

The programs and data are copied after it. This can take up some minutes according to speed of the CD drive or the network.



Licence



For the Licence, you put in the included licence diskette. You don't need to choose "any license diskette" with a demo version. At a later purchase of the full version, the possibility to make a full version for new installation with the necessary license diskette from the demo version exists.

With a Licence-Upgrade or if you goes want make version for a full version you from the demo like follows:

- you open the program Visual-Adress-
- click you in the symbol strip on ?
- you go on the menu **info**

Harvests you the new license with the point "Licence disk reads" one.